



Whale[®] Elegance Taps and Showers

READ CAREFULLY BEFORE INSTALLATION AND USE

To the Fitter: Ensure all relevant personnel read the points listed below and that a copy is passed on to the end user.

To the User: Read the points listed below before installation and use of the equipment.

APPLICATION

Elegance taps or shower units are intended for use in fresh water systems in boats, caravans and motorhomes. Use for any other purpose or with any other liquid is entirely at the users' risk.

BEFORE INSTALLATION

1. Check the tap or shower unit does not obstruct the use of sink covers etc.
2. Check that there is sufficient space below the worktop/sink surface to allow the shower unit hose to retract fully.
3. Check that the hose is not twisted or tangled. If the hose has taken up a permanent set this can be rectified by placing the hose in a container of hot water for 10 to 15 minutes.

MOUNTING FOR UNITS WITH A MOUNTING PLATE

1. Position tap or shower unit and wall bracket to allow shower head to fit into wall bracket when hose is extended.
2. Use template supplied in pack to cut out the main slot or holes required, and to drill the four 2.9 mm diameter screw holes.

3. After plumbing and wiring (if necessary) apply water resistant silicone sealant around the edges of the mounting plate (see Fig.1).
4. Secure mounting plate with screws provided, concealing the screw heads using the screw covers provided (see Fig.2). If required the screw covers are easily removed using a pointed instrument to lever them off.

Note: to ease fitting when microswitches are used, bend the crimp terminals attached to the microswitch inwards until they point vertically downwards.

FOR UNITS WITHOUT A MOUNTING PLATE

1. Position tap or shower unit and wall bracket to allow shower head to fit into wall bracket when hose is extended.
2. Cut out the holes required.
3. Apply water resistant silicone around each hole before securing

PLUMBING

Elegance taps or showers are supplied with grooved 12mm inlets for use with various pipe systems, see table below.

WIRING

Elegance taps or showers can be either:-

1. PRESSURE SWITCHED

Utilising a built-in pressure switch on the pump or an in-line pressure switch in the system.

If using the pressure system no further wiring of the tap/shower controls is necessary.

2. MICROSWITCHED SYSTEM

(i) The microswitches have a maximum recommended rating of 6 amps

(ii) Follow the wiring diagram. (see Fig. 3).

Note: Wires no less than 1 mm² cross sectional area should be used for wiring. It is advisable to fit a fuse of a suitable rating for the pump being used up to a maximum of 6 amps.

Plumbing Guide

Pipe System Used	Fitting required
12mm semi-rigid	Connect directly using Whale Quick Connect 12mm fittings
15mm semi-rigid	Use Whale Quick Connect adaptor WU1215
3/8" (10mm) bore flexible hose	Stainless steel hose clips
1/2" (13mm) bore flexible hose	Use Whale Quick Connect adaptor WX1509 and stainless steel hose clip



OPERATION OF SHOWER UNIT

The shower head can be set in three positions:

- Tap flow - over sink
- Shower flow - over shower tray or for rinsing sink
- Off position - temporarily shuts off the flow to economise on water usage.

Note: The OFF position should only be used to shut off the flow temporarily as the shower head is not designed to withstand constant pressure. It is not a drip proof seal. This action does not turn the pump off in microswitched systems.

MAINTENANCE

Regular inspection is recommended. Replacement components are available from the Whale Dealer Network.

Microswitches can be removed as follows:

- (i) Turn off power supply.
- (ii) Turn tap to off position.
- (iii) Remove the crimp terminals.
- (iv) Hold the sides of the microswitch clip with your

thumb and finger and gently pull off the clip.

(v) The microswitch should slide off the two retaining pins. Be careful not to break the pins off. (see Fig. 4)
Taps can be dismantled as follows:

- (i) Pull off knob(s) and spindle(s)
- (ii) Unscrew securing screw(s), using a 17mm (11/16") spanner.
- (iii) Control unit(s) can now be released for inspection. (See Fig. 5).

WINTERIZING

To avoid damage as a result of freezing, drain the entire water system. To protect Elegance Tap or Shower units, the Tap Control(s) and the shower handset on/off control should be opened when draining the system to enable stored water in the outlet to drain back through the control valves and out of the system. Ensure that both the hot and cold systems are fully drained, the cold drain plug (if fitted) is a separate drain plug from the heater drain plug. Tap spouts and shower heads should be unscrewed,

removed and stored in a dry place. Please consult your dealer if in difficulty. If they are unable to solve the problem, contact Whale Customer services: info@whalepumps.com.

WARRANTY

This Whale product is covered by 1 years warranty. Please see the enclosed document for details of our statement of limited warranty.

Fig. 1
Mounting Plate



Fig. 3
Microswitch Wiring Diagram

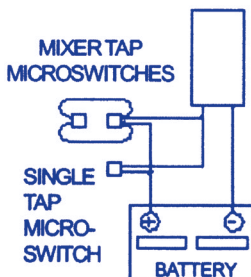


Fig. 2

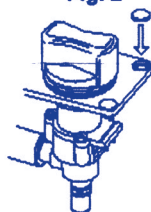


Fig. 4

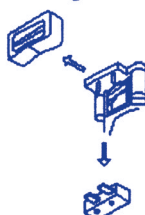


Fig. 5



Munster Simms Engineering Ltd.

Old belfast Road, Bangor, N. Ireland BT19 1LT Tel: +44 (0)28 9127 0531 Fax: +44 (0)28 9148 6421

Web: www.whalepumps.com Email: info@whalepumps.com

Ref No: 181.33 v7 0610